

Pesticide Environmental Stewardship Program



Sherry Glick

702-784-8276

glick.sherry@epa.gov



Mission:

PESP is a voluntary program that forms partnerships with pesticide users to reduce the potential health and environmental risks associated with pesticide use and implement pollution prevention strategies.

PESP is guided by the principle that, even in the absence of additional regulatory mandates, the informed actions of pesticide users reduce risk even further. Based on this principle, membership in the program is completely voluntary.

<http://www.epa.gov/pesp/>



History

- Joint testimony by EPA, FDA, and USDA
 - Fall 1993
 - committed USDA to IPM implementation
 - committed EPA to working with commodity groups to reduce pesticide use
- Meeting with stakeholders in Winter 1994
- Program launched in December 1994

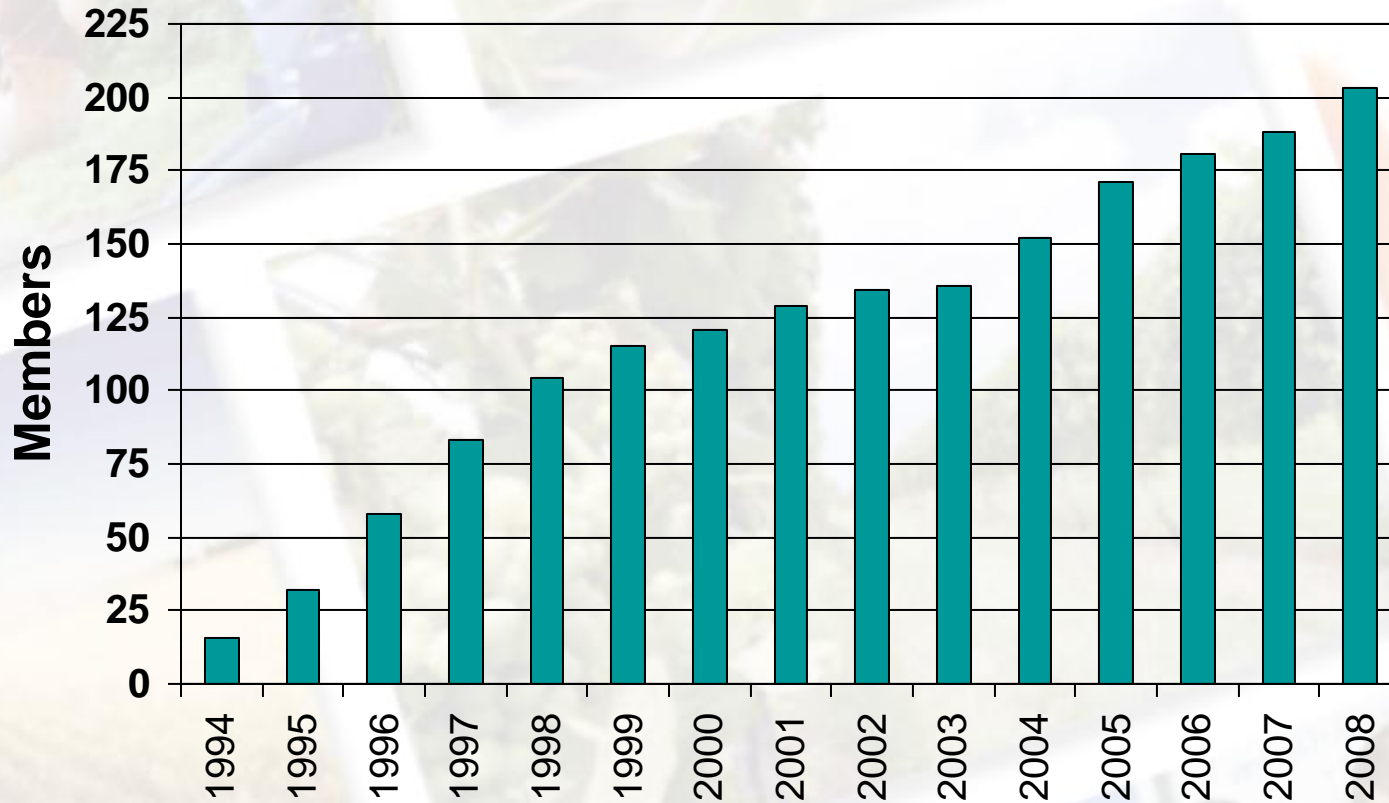


Value of Partnership

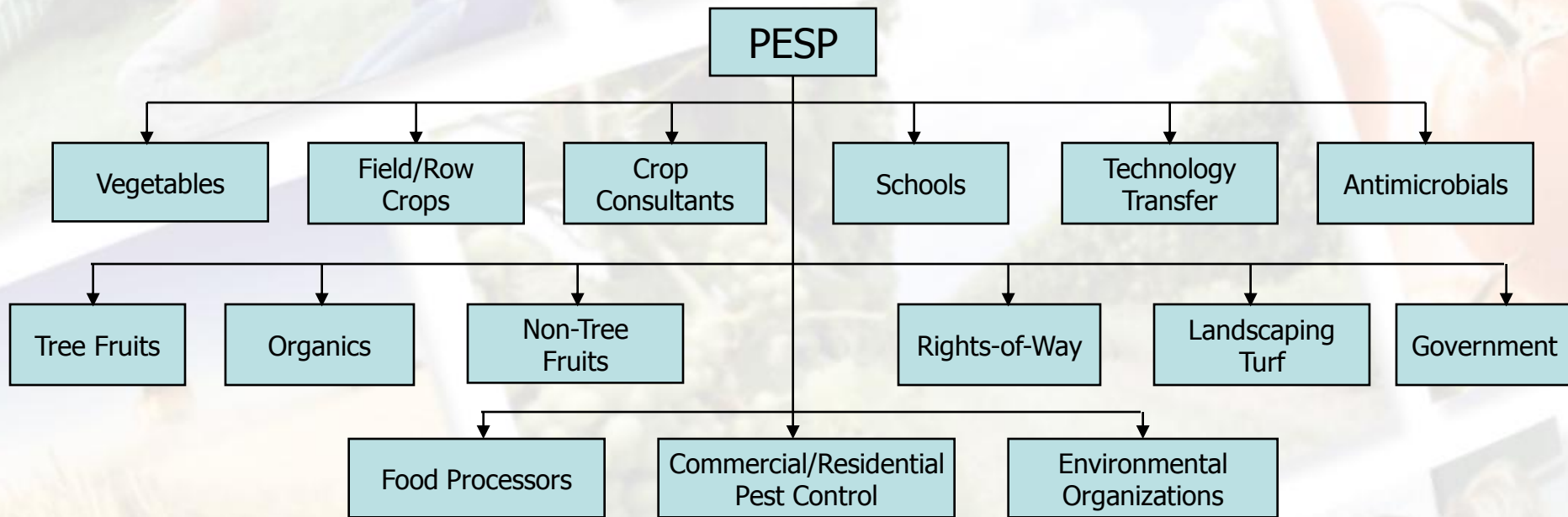
- Pesticide users are in the best position to know how to achieve pesticide risk and use reduction
- EPA is in a position to provide assistance to meet risk and use reduction goals



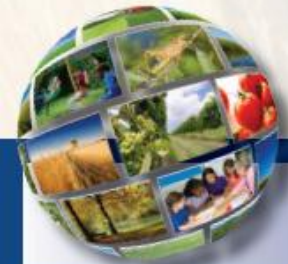
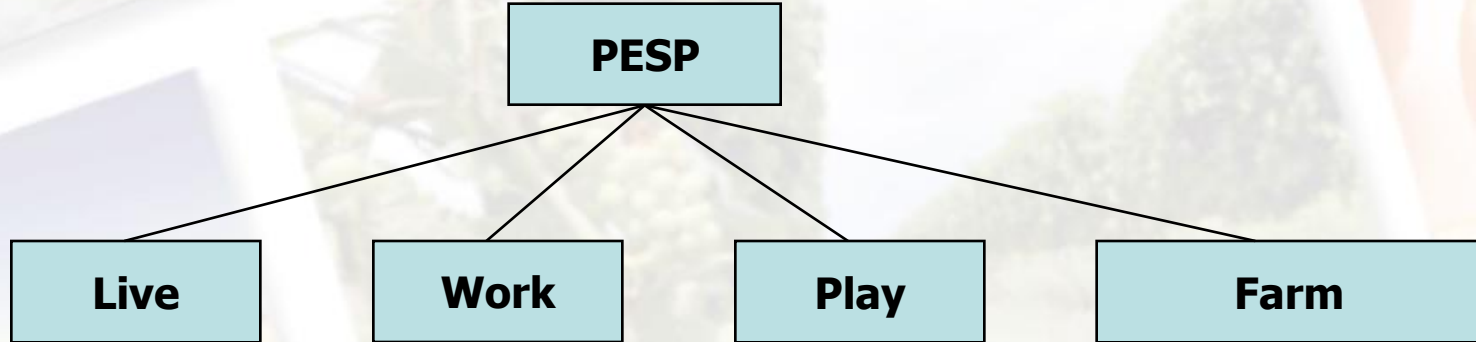
Membership



Current Structure



New and Upcoming Restructuring



Schools and PESP

- **School Members**

Auburn University

IPM Institute of N.A.

Kyrene Elementary Schools

Mayfield City School District

Monroe County School Corporation

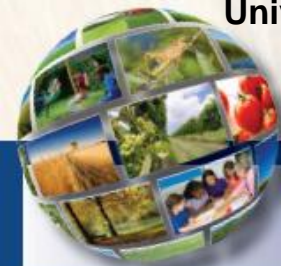
New York City Board of Education

Safer Pest Control Project

Southwest School IPM Technical Resource Center

University of Arizona – Maricopa Agricultural Center

University of Florida Cooperative Extension Service



The New Tiered PESP Membership Structure

- **PESP will be the first tiered EPA partnership program! Although it will be the first tiered partnership program at EPA, the tiered model has been successfully implemented by a number of state partnership programs and associations:**
 - **Wisconsin's Green Tier Program**
 - **Missouri's Environmental Management Partnership**
 - **Georgia's Partnership for a Sustainable Georgia**
 - **Airline incentive programs such as Delta Airlines Silver, Gold, and Platinum Medallion service levels**
 - **Professional Associations such as the American College of Healthcare Executives individual membership levels: Member, Diplomate, and Fellow**



The New Tiered PESP Membership Structure (con't)

The tiered PESP membership structure will include Bronze, Silver, and Gold membership levels. A tiered program will reward members based on their level of commitment and demonstrated results. Member benefits and strategy reporting requirements will be based on the member's level. This tiered approach will give members the opportunity to determine their own level of commitment.

- **The tiered PESP will include two membership requirement tracks: For-Profit; and Not-for-Profit. Regardless of a member's level or track, PESP will ask all members to:**
 - **commit to PESP's mission,**
 - **demonstrate the of effective IPM programs/practices, and**
 - **commit to environmental stewardship.**



Schools and PESP

- **Why Join PESP?**

- **Joining PESP gives your organization the opportunity to demonstrate a commitment to environmental stewardship and take steps to put this commitment into practice.**
- **Membership will enhance public perception of your organization, constituent support, and employee morale.**
- **PESP publicly recognizes members who have demonstrated a commitment to environmental stewardship and made progress in reducing pesticide risk. Recognition is in the form of articles in [PESP Update](#), [PESP Progress Reports](#), and PESP Wire.**

Call Sherry for more information or visit epa.gov/PESP

